

EM3xx

MULTI INPUT/OUTPUT MODULE AND CONVENTIONAL LINE INTERFACE



991g/03
991g/04
991g/05
991g/06
991g/07

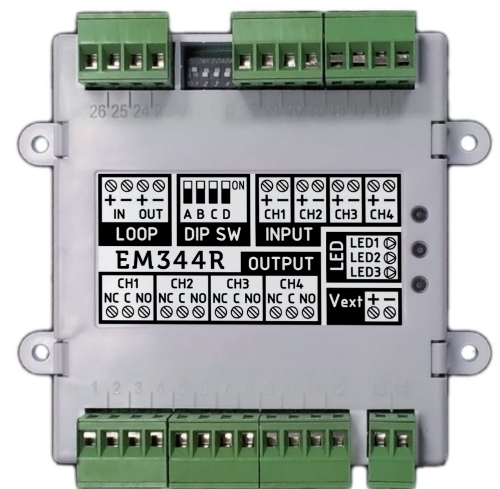


EN 54-17
EN 54-18

0051
0051-CPR-1869
0051-CPR-1870
0051-CPR-1868
0051-CPR-1866
0051-CPR-1867



VERSA+



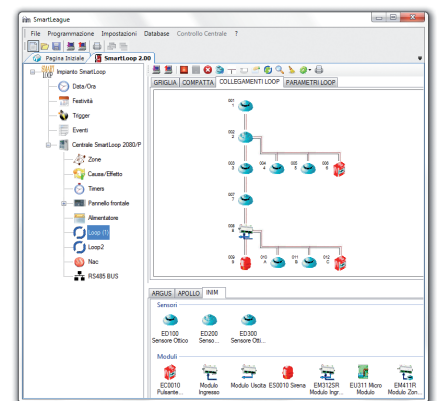
The EM3xx multi input/output module from **ENEA** series, provide up to 4 input and/or 4 output according to model. Each input/output is independent and fully programmable and can be associated to any control panel or network event.

Each device from the ENEA series is identified by a unique factory-assigned serial number. Therefore, these devices do not require the use of an address programmer. The serial number is located on the device label and on two stickers which can be positioned on the system layout and on the mounting base.

Once the loop wiring is complete, a manual programmer or a control panel via the **LoopMap** application, enrolls all the connected devices automatically and reconstructs a map indicating the wiring order of the connected devices, "T" junctions and all the physical characteristics of the Loop. LoopMap technology allows you reconstruct the exact installation layout and thus create an easy-to-use, interactive loop map which greatly simplifies and speeds up searches relating to system faults and maintenance work.

The serial self-addressing function, developed by Inim's R&D professionals, allows you to add new devices to an existing system without reprogramming it. In this way, the **LoopMap** specifications remain unchanged and the new devices are assigned available logical addresses (in order) and correctly positioned on the interactive map. The self-addressing function also eliminates many of the problems connected with the manual addressing procedure, such as time-consuming operations on rotary/DIP switches and errors caused by duplicated or wrong addresses and similar problems.

The inputs of EM34xx module are supervised at default (alarm, early-warning and fault). They can be used for the connection to the control panel and the addressing of detectors with relay output, gas detectors, beam detectors, thermosensitive cables, etc. During the installation, 2 inputs can be configured as conventional zones, powered from the loop or from a local power supply, or as 4-20mA gas inputs. The 4 outputs, according to model, can be supervised for sounder control or voltage free contacts.



The EM3xx, as all ENEA series devices, is equipped with an isolator module and it occupies 4 loop addresses.

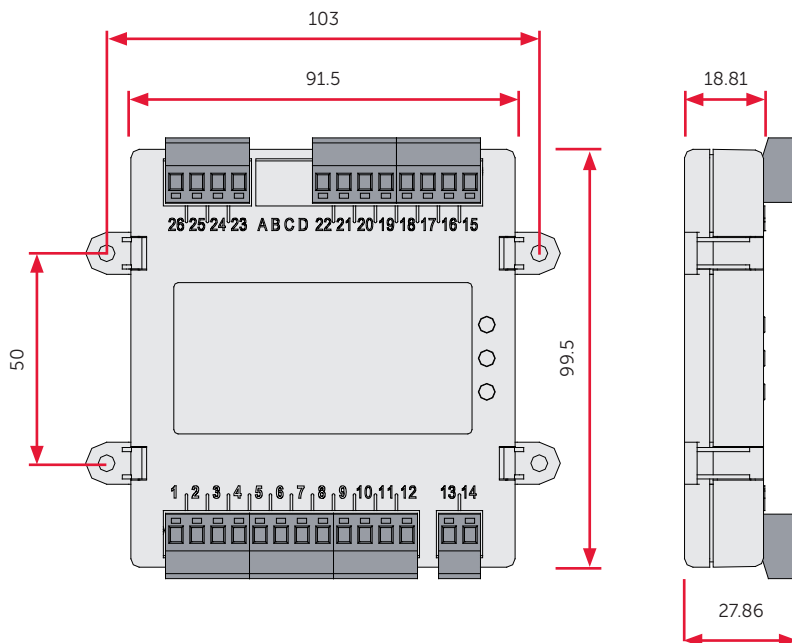
The EM312SR module connects to the same line as the detectors.

Model	Inputs		Outputs	
	number	selectable as conventional zone	number	type
EM344S	4	2	4	supervised
EM344R	4	2	4	dry contacts
EM340	4	2	/	/
EM304S	/	/	4	supervised
EM304R	/	/	4	dry contacts

TECHNICAL SPECIFICATIONS

- Certification: CPR EN54/pt18 -pt17
- Self-addressing (each device is identified by a factory-assigned serial number)
- LoopMap Technology
- Versa++ Technology
- 240 addresses
- 4 supervised inputs (according to the model)
- 2 inputs configurable as conventional line interface or as 4-20mA gas detector interface (according to the model)
- 4 supervised outputs (according to the model)
- 4 voltage free contact 1A@30Vdc outputs (according to the model)
- 1 supervised input for the activation of the devices connected to the output
- DIP switch for the assignment of the input functions
- Built-in short-circuit isolator
- Programmable warning threshold
- Power supply voltage: 19 - 30Vdc
- Current draw during stand-by max 80µA @ 24V
- Current draw during alarm max 20mA @ 27.6V
- Tri-colour LED for input/output/isolator status signalling
- Operating temperature: from -5°C to +40°C
- Dimensions (WxHxD) 113X106X29 mm

DIMENSIONS



IN THE PACKAGE

- Package dimensions: 110 x 97 x 57 mm
- Weight with packaging: 170g

ORDER CODES

- EM340** Analog addressable module with 4 supervised inputs, 2 of them configurable as conventional line interface or as 4-20mA gas detector interface
- EM304S** Analog addressable module with 4 supervised outputs
- EM344S** Analog addressable module with 4 supervised inputs, 2 of them configurable as conventional line interface or as 4-20mA gas detector interface, and with 4 supervised outputs
- EM304R** Analog addressable module with 4 voltage free outputs
- EM344R** Analog addressable module with 4 supervised inputs, 2 of them configurable as conventional line interface or as 4-20mA gas detector interface, and with 4 voltage free outputs
- EM110** Input module
- EM312SR** Input/output module
- EM411R** Conventional line input module
- EU311** Input/output micromodule
- EU311C** Micromodule for loop connection of conventional callpoints