

EM312SR



991g/01



EN 54-17
EN 54-18

0051

0051-CPR-1872

INPUT/OUTPUT ADDRESSABLE MODULE



EM312SR module comes from the **ENE A** series of the Inim Electronics.

Each device from the ENEA series is identified by a unique factory-assigned serial number. Therefore, these devices do not require the use of an address programmer. The serial number is located on the device label and on two stickers which can be positioned on the system layout and on the mounting base.

Once the loop wiring is complete, a manual programmer or a control panel via the **LoopMap** application, enrolls all the connected devices automatically and reconstructs a map indicating the wiring order of the connected devices, "T" junctions and all the physical characteristics of the Loop. LoopMap technology allows you reconstruct the exact installation layout and thus create an easy-to-use, interactive loop map which greatly simplifies and speeds up searches relating to system faults and maintenance work.

The serial self-addressing function, developed by Inim's R&D professionals, allows you to add new devices to an existing system without reprogramming it. In this way, the **LoopMap** specifications remain unchanged and the new devices are assigned available logical addresses (in order) and correctly positioned on the interactive map.

The self-addressing function also eliminates many of the problems connected with the manual addressing procedure, such as time-consuming operations on rotary/DIP switches and errors caused by duplicated or wrong addresses and similar problems.

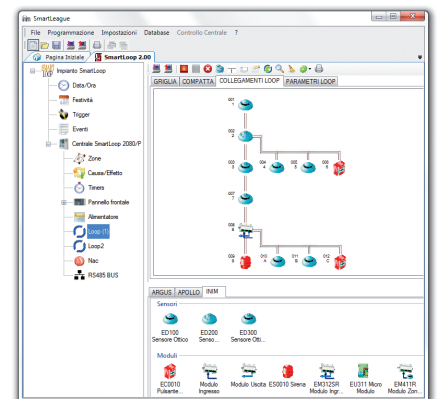
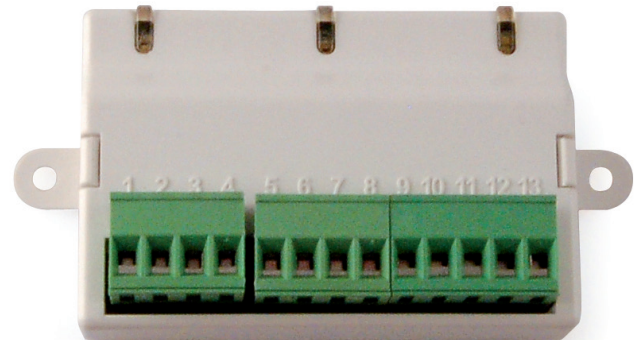
The EM312SR module is equipped with:

- a programmable NO/NC relay (assignable to any of the system events), a voltage-free contact usable for all types of activation commands
- an independent supervised input (alarm, warning and fault) suitable for addressing contacts which refer to the fire control system
- a supervised output capable of driving one or more audible or audible/visual signalling devices

In this way, the module is suitable for control and supervision of fire doors and rollerblinds, electromagnets, alarm signalling devices, etc., and also for addressing detectors with output relays, gas detectors, linear smoke detector barriers, thermosensitive wire, etc.

The module connects to the same line as the detectors.

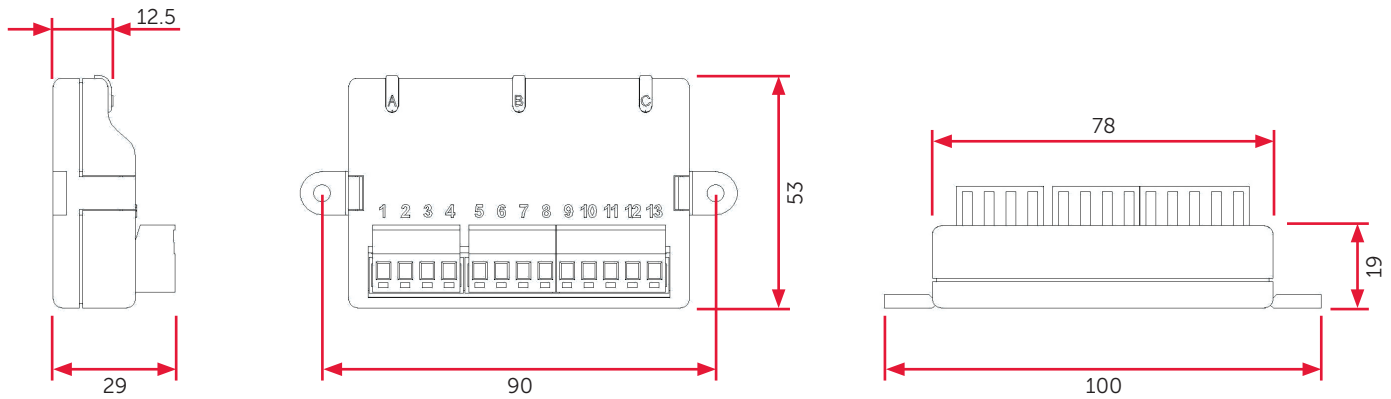
The EM312SR, as all ENEA series devices, is equipped with an isolator module and it occupies a loop address.



TECHNICAL SPECIFICATIONS

- Certification: CPR EN54/pt18-pt17
- Self-addressing (each device is identified by a factory-assigned serial number)
- LoopMap Technology
- Versa++ Technology
- 240 addresses
- 1 supervised input
- 1 supervised output
- 1 supervised input for the activation of the devices connected to the output
- 1 changeover relay output 1A@30Vdc
- Built-in short-circuit isolator
- Programmable warning threshold
- Power supply voltage: 19 - 30Vdc
- Current draw during standby: 80µA
- Current draw during alarm: 20mA
- Tri-colour LED for input/output/isolator status signalling
- Dimensions (H x L x D) 53 x 100 x 29mm
- Weight 66 g
- Operating temperature: from -5°C to +40°C

DIMENSIONS



WIRING DIAGRAMS TABLES

- ITD010** EM312SR Wiring Diagram Input Generic
- ITD011** EM312SR Wiring Diagram Output
- ITI012** EM312SR Installation
- ITD013** EM312SR to BDH100 Wiring diagram
- ITD014** EM312SR to BDH100 Wiring diagram loop powered
- ITD015** EM312SR to Micra100 Wiring diagram
- ITD016** EM312SR to GAS ING55-5xx Relay
- ITD017** EM312SR to GAS ING55-5xx INA55-505

ORDER CODES

- EM110** Input module
- EM312SR** Input/Output module
- EM411R** Conventional line input module
- EM3XX** Multi input/output module with conventional line interface
- EU311** Input/output micromodule
- EU311C** Micromodule for loop connection of conventional callpoints